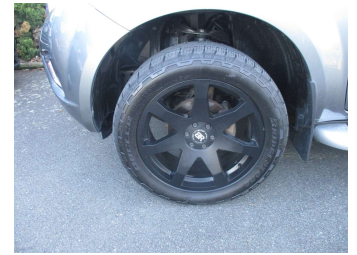


# 2016 Nissan NAVARA ST-X 2.3D/4WD/6MT/UT



Purchase Price

**\$31,995**

Includes GST, Registration & Licensing

Finance may be available on this vehicle. Ask one of our friendly staff for more information.

Gain peace of mind with Mechanical Breakdown Insurance. **Ask us how.**



## Top features

- » 20 Inch Alloys
- » 4WD
- » ABS Braking
- » Air Conditioning
- » Auto Lights
- » Auto Wipers
- » Bluetooth
- » Canopy
- » CD PLAYER
- » Central Locking
- » Central Locking
- » Climate Control
- » Cruise Control
- » Cruise Control
- » Dual Air Bags
- » Electric Mirrors
- » Electric Mirrors
- » Electric Windows

Body Style

**4 door, Ute**

Odometer

**113,730 km**

Engine

**2298 cc**

Fuel Type

**Diesel**

Transmission

**6-Speed Manual, 4WD**

Wheels

-

VIN

**MNTCB4D23A0005151**

Interior

**Black, Leather**

Safety



Based on 2025 UCSR rating for 15-23 models

Reg No.

**RTN150**

Ext Colour

**Grey**

History

**NZ New, 2 owners**

Seats

**5 seats, Leather**

CO2 Emissions

★★★★☆

**200 grams/km**

Energy Economy

★★★★☆

**Annual fuel cost of \$3,160**

**7.5L per 100km**

Cost per year is an estimate based on diesel price of \$2.00 per litre and an average distance of 14000 km. Includes Road User Charges (RUC). Emissions and Energy Economy figures standardised to 3P WLTP.

**Stock ID: 10525**

**KERRY HARVEY AUTOS**

Kerry Harvey Autos | Phone 06 355 5977 | Email [kerry@kerryharveyautos.co.nz](mailto:kerry@kerryharveyautos.co.nz)  
205 Main Street, Palmerston North, New Zealand  
[www.kerryharveyautos.co.nz](http://www.kerryharveyautos.co.nz)



★★★★★  
4.88 | 586 reviews