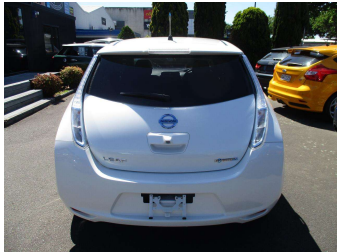


# 2015 Nissan Leaf 24X



### Purchase Price

Includes GST, Registration & Licensing

**\$8,995**

Finance may be available on this vehicle. Ask one of our friendly staff for more information.

Gain peace of mind with Mechanical Breakdown Insurance. **Ask us how.**



### Top features

- » ABS Braking
- » Air Conditioning
- » Auto Lights
- » Auto Wipers
- » Bluetooth
- » Central Locking
- » Central Locking
- » Child seat anchor poin...
- » Climate Control
- » Cruise Control
- » Cruise Control
- » Dual Air Bags
- » Electric Mirrors
- » Electric Mirrors
- » Electric Windows
- » Heated Seats
- » Reverse Camera
- » Reversing Camera

### Body Style

**5 door, Hatchback**

### Odometer

**30,775 km**

### Engine

**0 cc**

### Fuel Type

**Electricity**

### Transmission

**Auto, Front Wheel**

### Wheels

-

### VIN

**7AT0DH8KX25114001**

### Interior

**Black, Cloth**

### Safety



Based on 2024 VSRR rating

### Reg No.

-

### Ext Colour

**Pearl White**

### History

-

### Seats

**Cloth**

### CO2 Emissions

★★★★★☆☆

**0 grams/km**

### Energy Economy

★★★★★☆☆

**Annual fuel cost not available**

Cost per year is an estimate based on electricity price of \$0.27 per kWh and an average distance of 14000 km. Includes Road User Charges (RUC). Emissions and Energy Economy figures standardised to 3P WLTP.

**Stock ID: 10280**

**KERRY HARVEY AUTOS**

Kerry Harvey Autos | Phone 06 355 5977 | Email  
kerry@kerryharveyautos.co.nz  
205 Main Street, Palmerston North, New Zealand  
www.kerryharveyautos.co.nz



★★★★★  
4.87 | 522 reviews