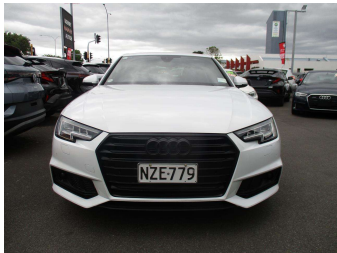


# 2016 Audi A4 2.0 TFSI S LINE



### Purchase Price

Includes GST, Registration & Licensing

**\$17,995**

Finance may be available on this vehicle. Ask one of our friendly staff for more information.

Gain peace of mind with Mechanical Breakdown Insurance. **Ask us how.**



### Top features

- » ABS Brakes
- » Adaptive Cruise
- » Air Conditioning
- » Android Auto
- » Android Auto / Apple C...
- » Apple Car Play
- » Auto Lights
- » Auto Wipers
- » Bluetooth
- » Central Locking
- » Central Locking
- » Child seat anchor poin...
- » Climate Control
- » Cruise Control
- » Cruise Control
- » Dual Air Bags
- » Electric Mirrors
- » Electric Mirrors (Retr...

### Body Style

**4 door, Sedan**

### Odometer

**134,072 km**

### Engine

**1980 cc**

### Fuel Type

**Petrol**

### Transmission

**Auto, Front Wheel**

### Wheels

-

### VIN

**WAUZZZF40GA090909**

### Interior

**grey, Cloth**

### Safety



Based on 2024 VSRR rating

### Reg No.

**NZE779**

### Ext Colour

**White**

### History

**Ex-Overseas, 1 owner**

### Seats

**5 seats, Half Leather**

### CO2 Emissions

★★★★☆

**147 grams/km**

### Energy Economy

★★★★☆☆

**Annual fuel cost of \$2,470  
6.3L per 100km**

Cost per year is an estimate based on petrol price of \$2.80 per litre and an average distance of 14000 km. Emissions and Energy Economy figures standardised to 3P WLTP.

**Stock ID: 10162**

**KERRY HARVEY AUTOS**

Kerry Harvey Autos | Phone 06 355 5977 | Email  
kerry@kerryharveyautos.co.nz  
205 Main Street, Palmerston North, New Zealand  
www.kerryharveyautos.co.nz



★★★★★  
4.87 | 522 reviews